

NPB-1000 Automatic Bagging System

Nae Pac Automation is proud to announce the addition of the **NPB-1000** automatic pouch, fill, and seal system to its family of packaging products. The **NPB-1000** is the result of almost 2 years of research and development and represents so much more than just another doypack bagger. **Nae Pac** worked directly with packagers to identify problems and concerns they had with the bagging systems available today. The result is an operator friendly, high-yield system that gets more product into the bag and not on the floor. The **NPB-1000** was also designed for the fastest change-over between different bag sizes in the industry; the average time for a complete change-over is less than 4 minutes. As with all **Nae Pac** products, the **NPB-1000** features the highest quality of workmanship, the best purchased components from well-known manufacturers, and a full one year warranty on all components.



338 Commerce Street Unit 10
Williston, VT 05495 USA
802-497-3654 Fax: 802-497-3448
web: www.naepac.com email: sales@naepac.com



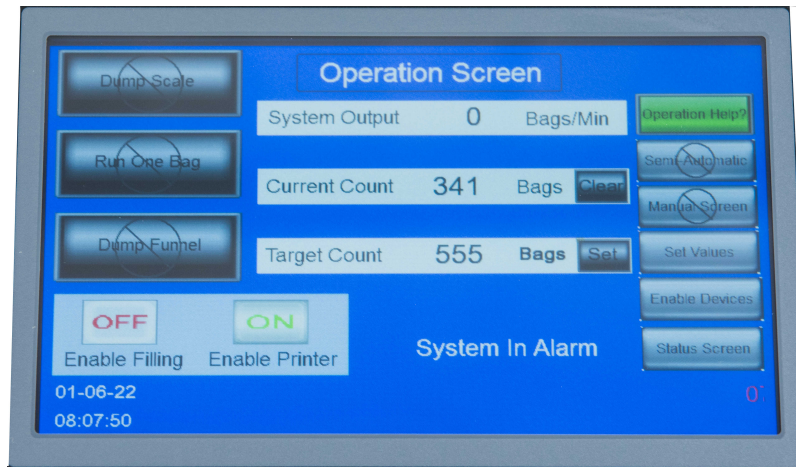
Automatic pre-made pouch filling and sealing system

PLC CONTROLLER

State-of-the-art OMRON PLC Controller allows you to enter and save 20 bag configurations for quick, accurate changeover.

DISPLAY

6 inch color display with integral touch screen features multiple functions and is designed for user friendly operation. Help Menu built in for setting reference.



Technical Specifications

STANDARD CAPABILITIES:

Up to 15 BPM depending on product, bag sizes, and fill requirements

POUCH CHARACTERISTICS:

Pre-made 3 or 4 side-seal pouch, quad-side gusset, or stand-up pouch

POUCH SPECIFICATIONS:

Width: 4" to 12" wide
Length: 6" to 14" long
Gusset: 0" to 4"

DIMENSIONS:

Approx. 6 ft long by 3 ft wide

CONSTRUCTION:

Stainless steel frame and precision aluminum parts

POWER REQUIREMENTS:

120 VAC, 60 Hz (dedicated circuit preferred)

AIR REQUIREMENT:

90 PSIG, 15 CFM